



ROUSH Illuminated Door Sill Scuff Plate Kit

Kit Part Number 1310R010501

Application: 2010 Ford Mustang GT

Installation Instructions

Before installing your ROUSH Performance Product(s), read through the entire installation procedure and check to make sure all items are present. Contact ROUSH Customer Service at 1-800-59-ROUSH, 9:00 AM to 5:00 PM EST, weekdays, for any questions regarding fit, missing parts or instructions that are unclear to you.



ROUSH

THE ART OF PERFORMANCE ENGINEERING



Packaging List for ROUSH Door Sill Scuff Plate Kit

Part Description	ROUSH Part Number	Qty
Illuminated ROUSH Scuff Plate Kit	1310R010501	1
Illuminated Scuff Plate - "ROUSH" - LH	13106313201	1
Illuminated Scuff Plate - "ROUSH" - RH	13106313200	1
Installation Instructions	1310R010501IM	1

Suggested Tools and Materials Required

- Isopropyl Alcohol Packets
- Needle nose pliers



LIMIT OF LIABILITY STATEMENT

The information contained in this publication was accurate and in effect at the time the publication was approved for printing and is subject to change without notice or liability. ROUSH Performance Products (RPP) reserves the right to revise the information presented herein or to discontinue the production of parts described at any time.

SAFETY REQUIREMENTS

STOP! READ IMPORTANT SAFETY CAUTIONS AND WARNINGS BEFORE PROCEEDING.

IMPORTANT SAFETY NOTICE

Appropriate disassembly, assembly methods and procedures are essential to ensure the personal safety of the individual performing the kit installation. Improper installation due to the failure to correctly follow these instructions could cause personal injury or death. Read each step of the installation manual carefully before starting the actual installation.

1. Always wear safety glasses for eye protection.
2. Place ignition switch in the OFF position.
3. Always apply the parking brake when working on a vehicle.
4. Chock the front and rear tires to prevent unexpected vehicle movement.
5. If working without a lift, always consult vehicle manual for correct lifting specifications.
6. Operate the engine only in well-ventilated areas to avoid exposure to carbon monoxide.
7. Do not smoke or use flammable items near or around the fuel system.
8. Use chemicals and cleaners in well-ventilated areas.
9. Batteries produce explosive gases, which can cause personal injury. Therefore, do not allow flames, sparks or flammable substances to come near the battery.
10. Keeps hands and any other objects away from the radiator fan blades.
11. Keep yourself and your clothing away from moving parts when the engine is running.
12. Do not wear loose clothing or jewelry that can get caught in rotating parts or scratch surface finishes.
13. Allow the engine, cooling system, brakes and exhaust to cool before working on a vehicle.

WORK SAFELY!

Perform this installation on a good clean level surface for maximum safety and with the engine turned off.

Scuff Plate Removal

1. Open the driver's door. Starting at the front of the scuff plate, pull the left scuff plate straight up from the door sill releasing the four (4) spring lock retainers. Refer to Figure 1. The scuff plate is connected to the vehicle wiring harness so only lift 2-3 inches.



Figure 1

2. Roll the scuff plate toward the driver's seat. Press the release tab and unplug the wire harness connector. Refer to Figure 2. Remove the left scuff plate from the vehicle.



Figure 2

ROUSH

THE ART OF PERFORMANCE ENGINEERING

3. If any of the spring lock retainers separate from the scuff plate and remain attached to the door sill sheet metal, use needle nose pliers to remove the spring lock retainer from the slot in the door sill. Refer to Figure 3.



Figure 3

4. Remove any foam tape residue that remains on the door sill sheet metal and clean the area with Isopropyl Alcohol. Allow to Dry.

Scuff Plate Installation

5. Obtain the LH ROUSH Scuff Plate. LH and RH Scuff Plates can be identified by the "LH" or "RH" marking on the back side of the Scuff Plate. Refer to Figure 4.

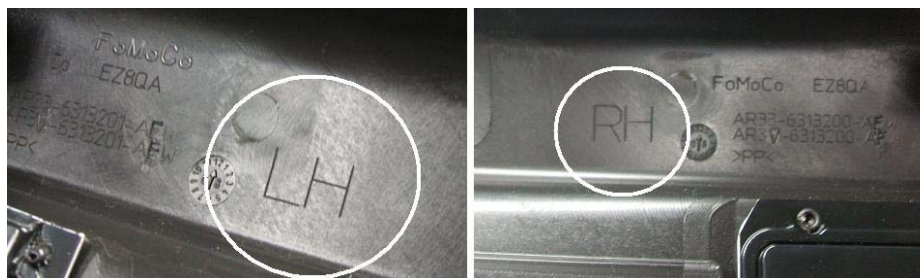


Figure 4

6. Place the ROUSH Scuff Plate next to the driver's seat and connect the wire harness connector to the vehicle wiring harness connector. Ensure the connector is fully inserted and snaps into place. Refer to Figure 5.



Figure 5

7. Remove the three (3) pieces of red backing tape from the back side of the ROUSH Scuff Plate. Refer to Figure 6.

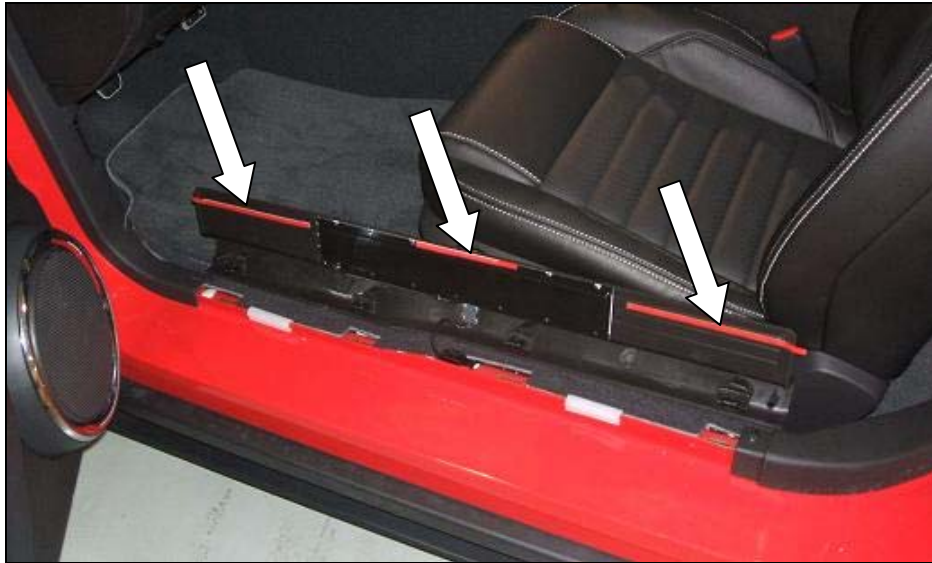


Figure 6

8. Align the four (4) retainer spring clips to the openings in the sill plate sheet metal and press the ROUSH Scuff Plate to the door sill. Refer to Figure 7. Ensure all four (4) fasteners are pressed fully into place. Press the outer edge of the scuff plate (foam tape) to the door sill sheet metal. This will adhere the tape for a tight bond.



Figure 7



9. Repeat steps 1 through 8 and install the right ROUSH Scuff Plate onto the right door sill.
10. Referring to your Owners Manual, cycle through the My Color selections to verify the ROUSH Scuff Plate illumination.

Congratulations!!! You have completed the installation of the ROUSH Performance Products, Door Sill Scuff Plate Kit. It is recommended that you save all parts removed from your vehicle during the installation of this kit.

WARRANTY

All retail parts carry a 90-day warranty from the date of purchase. This warranty covers defects in materials or workmanship, and does not include (i) normal wear and tear, environmental conditions, improper installation; (ii) road hazards, misuse, abuse, neglect, accidents, collision, fire, theft, freezing, vandalism, riot, explosion, or objects striking the vehicle; (iii) misusing the vehicle, such as driving over curbs, overloading, racing, or using the vehicle as a stationary power source; (iv) altering, disassembling or modifying the parts; (v) defects caused or induced by failures, breakdowns, or damage by other parts, components or the vehicle; (vi) subjecting the parts to excessive moisture or water or any motor vehicle fluids (e.g.: oil, anti-freeze, battery acid, brake fluid, etc.); (vii) acts of God, natural disasters and other similar causes beyond the reasonable control of ROUSH; or (viii) application of chemicals that affect the parts. This Limited Warranty does not cover surface deterioration of paint, trim, and appearance items that result from use and/or exposure to the elements, such as stone chips, scratches, bird droppings, lightning, hail, windstorm, dings, dents, earthquake, road salt, tree sap, water or flood.

ROUSH SHALL NOT BE LIABLE TO REIMBURSE CUSTOMER/DEALER FOR INCIDENTAL OR CONSEQUENTIAL DAMAGES RESULTING FROM THE INSTALLATION OR USE OF ANY PRODUCT SOLD THROUGH THIS CATALOG OR ARISING OUT OF ANY BREACH OF WARRANTY. EXCEPT AS MAY BE STATED IN THIS CATALOG, ROUSH DISCLAIMS ALL EXPRESS AND IMPLIED WARRANTIES, INCLUDING THE WARRANTIES OF MERCHANTABILITY AND FITNESS FOR A PARTICULAR PURPOSE. IN NO EVENT SHALL ROUSH'S LIABILITY EXCEED THE PRICE PAID BY CUSTOMER/DEALER FOR PRODUCTS SOLD REGARDLESS IF ROUSH HAS BEEN ADVISED IN ADVANCE OF ANY POTENTIAL PROBLEM OR IF A CLAIM IS BASED ON CONTRACT, TORT, STRICT LIABILITY, PRODUCT LIABILITY OR OTHERWISE. SOME STATES DO NOT ALLOW THE EXCLUSION OR LIMITATION OF IMPLIED WARRANTIES OR THEIR DURATION, OR LIABILITY FOR INCIDENTAL OR CONSEQUENTIAL DAMAGES, SO THE ABOVE EXCLUSIONS OR LIMITATIONS MAY NOT APPLY.